



Roland Mount , Coventry, CV6 4HP Offers over £240,000

Evans Estates is delighted to present this charming three-bedroom semi-detached family home, ideally located on a corner plot in the Holbrooks area of Coventry, known as the Sky Blue City. This property is particularly appealing for families, as it falls within the catchment area of the highly regarded President Kennedy School.

Upon entering, you will find a welcoming layout that includes two spacious reception rooms, perfect for both relaxation and entertaining. The kitchen is well-appointed, providing a functional space for culinary pursuits. The first floor boasts three comfortable bedrooms, offering ample space for family living, along with a conveniently located shower room.

The property benefits from double glazing and gas central heating, ensuring a warm and inviting atmosphere throughout the year. Externally, the home features well-maintained gardens to the front, side, and rear, providing a lovely outdoor space for children to play or for hosting summer gatherings. Additionally, there is off-road parking available, along with access to a garage, adding to the convenience of this delightful residence.

This semi-detached house is not only a wonderful family home but also a fantastic opportunity for those looking to settle in a vibrant community. With its excellent location and ample living space, this property is sure to attract interest. We invite you to view this lovely home and discover all it has to offer.

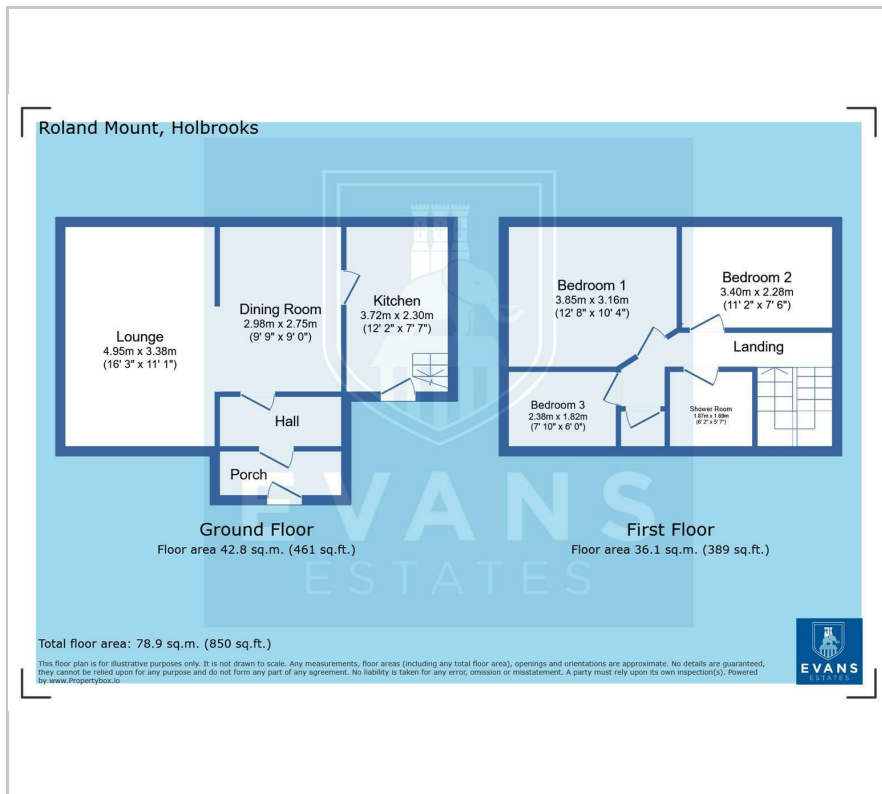
- Corner Plot
- Three Bedrooms
- Off Road Parking
- Lounge and Dining Room
- Extended Kitchen

Viewing

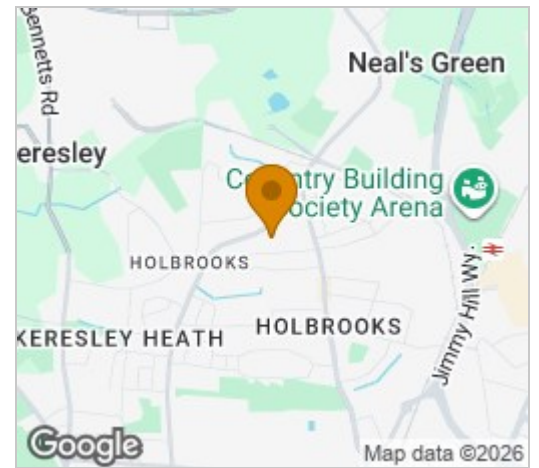
Please contact our Evans Estates Office on 02476333363 if you wish to arrange a viewing appointment for this property or require further information.



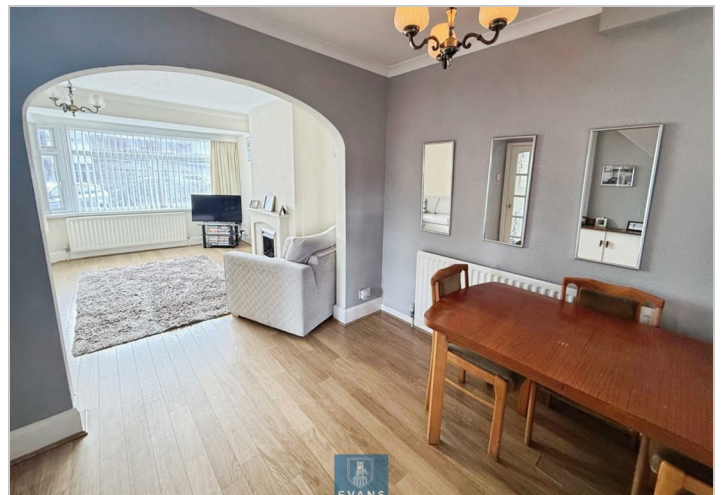
Floor Plan



Area Map



Energy Efficiency Graph



These particulars, whilst believed to be accurate are set out as a general outline only for guidance and do not constitute any part of an offer or contract. Intending purchasers should not rely on them as statements of representation of fact, but must satisfy themselves by inspection or otherwise as to their accuracy. No person in this firm's authority has the authority to make or give any representation or warranty in respect of the property.

47 Headington Avenue, Coventry, West Midlands, CV6 2GX
Tel: 02476333363 Email: info@evans-estates.co.uk <https://www.evans-estates.co.uk>